



Building Your Business
is Our Business!

We provide...

- General Construction
- Design-Build Services
- Construction Management
- Commercial, Industrial Manufacturing, Food & Beverage, and Healthcare Expertise

We are your
single-source solution.



DSC Receives Easterseals Volunteer of the Year

Dean Snyder Construction was honored to receive the Corporate Volunteer of the Year award this year from Easterseals of Iowa at their 2018 Annual Celebrations night. Earlier this year, DSC donated time and materials to a few projects at Camp Sunnyside.

Easterseals provides services to people with disabilities/ special needs and their families to have equal opportunities to live, learn, work and play in their communities.

Co-owner Don Snyder, left, accepted the award on behalf of Dean Snyder Construction.

THANK YOU FOR YOUR BUSINESS & SUPPORT!

Dean Snyder Construction would like to thank our clients, friends, and entire DSC family for voting us one of the best in the category of **BEST GENERAL CONTRACTOR** in the 2018 annual "Best of Des Moines" contest.



On Location, Fall/Winter 2018

Dean Snyder Construction
www.deansnyderconst.com

913 N 14th St / PO Box 181
Clear Lake, IA 50428
F: 641-357-2232
P: 641-357-2283
5151 SE Rio Court
Ankeny, IA 50021
F: 515-289-0725
P: 515-289-0720

Return Services
Requested

OnLocation

The DSC Commitment

Dean Snyder Construction is committed to construct the best quality product and be a leader in exceptional value, service, and safety. We promise to deliver total customer satisfaction and peace of mind on every project, big or small.

www.deansnyderconst.com

On Site



On Time



On Budget



On Your Team

For newsletter questions or comments, contact Kelly at kellys@deansnyderconst.com

Follow @DeanSnyderConst



Above: Austin Pehl, business development with ATURA architecture, explains to NIACC Building Trade students new technology and job opportunities within the architectural/construction fields.

DSC Encourages Students to Pursue Trades Program

In 2018, articles on construction trends boasted about advanced technology in estimating, the use of drones becoming increasingly more popular to collect data and capture project progress, offsite building with pre-fab manufacturing, and "smart buildings" being the new "green."

The one trend that continues to keep construction companies on high alert? The shortage of skilled labor.

"Hiring within the construction industry continues to be an on-going challenge," says Nate Carney, Director of Business Development. "We have an aging workforce, many of whom are nearing retirement. If we're going to replace those jobs, it's up to us to recruit the younger generation of kids and bring awareness for the many opportunities within the construction industry."

DSC has started recruitment efforts in area high school classrooms and community college trades programs. Students are invited to visit job sites, use our virtual reality software to walk through projects in the design phase, and ask questions about the hiring process.

"We are committed to the success of those interested in a construction career. We want to show them there are paths other than four-year college degrees, and by the time their peers are graduating, they could already be advancing in their career," said Carney.

DEAN SNYDER CONSTRUCTION

FALL/WINTER 2018 this issue

Equipment Setting for Danfoss P.2
Retirement Community Expansion P.2
Church Addition and Remodel Project P.2
New Culvers for Eden Prairie P.3
DSC Receives Volunteer of Year Award P.4



New Hires at DSC!



Joining the IT department at DSC is **Fred Roth**. Fred previously worked for Titan Pro as their Systems & Network Administrator.

Fred's role as an IT Support Technician includes any help desk requests and network issues.

Joining our Ankeny office is Project Manager/Estimator **Zach Smith**. Zach has a Construction Engineering degree from Iowa State University and previously worked for Henning Companies.



DSC Long-Time Employee Retiring

After 30 years in various roles with Dean Snyder Construction, Donna Phariss is retiring.



"When I started in 1988, there were 19 employees, and now there are over 200," she said.

Donna's job title consisted of almost everything in the office from payroll, accounts payable, and billing to her most current position in accounts receivable. She even helped bid a project when the only project manager we had at the time was in the hospital with his wife having a baby.

When asked about her experience working for the Snyder Family, she choked up a bit and said, "Unbelievable. You couldn't ask for a better bunch of people."

"I wouldn't have traded my time here for anything. I'll miss everybody. It's just time for another chapter," she said.

Donna plans to move closer to family in the next year or so.



Like DSC on Facebook for more company updates!

www.facebook.com/deansnyderconst



DSC Crews Help Move Danfoss Line to Kentucky

Dean Snyder Construction recently completed several projects for the manufacturing company Danfoss. In 2016, Danfoss acquired Kentucky-based White Drive Products, moving the plant's orbital motor line to White Drive's plant in Kentucky. This summer, DSC crews removed, relocated, and installed a small motor assembly line from their Ames location to Hopkinsville, Kentucky.

Impressed with our quality, Danfoss asked DSC to return to Kentucky for a concrete and sitework project. Crews also remodeled the lobby at the Ames location this summer.

New Housing Expansion for Retirement Community

Dean Snyder Construction broke ground this spring on a \$3.9 million assisted living addition for Country Meadows Place at their existing 36-apartment retirement community in Mason City, Iowa.



The 20,350 SF single-story wood-framed addition includes 20 new units ranging in size from 470 SF one-bedroom apartments, 540 SF one-bedroom deluxe apartments, and 840 SF two-bedroom apartments. The complex will also include a dining room, common area lounge, private dining area, library, and an exercise area.

Working together with Master Builders of Iowa (MBI) and the Iowa Occupational Safety and Health Administration (OSHA), the jobsite has been declared a part of the WORKSAFE Program. This program promotes, trains, and recognizes best safety practices on construction sites and facilities in the state of Iowa. The goals of the program are to encourage and recognize potential hazards and engage those involved to participate in safe work behavior and training.

DSC Helping Update Trinity Lutheran Church

DSC crews are currently working at Trinity Lutheran Church in Mason City, IA, on a new three-story 8,550 SF addition.



Broken into two phases, this project will help solve space issues and provide additional room for educational offerings. The project includes tearing down an existing entry way between the church and their attached education wing for a welcoming/gathering space on the main level for large group gatherings and connecting before and after worship.

A new elevator will provide full accessibility to the education wing and the front of the sanctuary. A sheltered drop-off space will allow for safer entry during adverse weather. The sanctuary will also be receiving HVAC updates and improved technology.



Construction Started on New Culver's

DSC crews started this summer on a new 4,700 SF Culver's restaurant in Eden Prairie, Minnesota. Their existing Culver's will be torn down due to a new light rail project going through the property.

Design of the fast-food restaurant includes architectural details to match the requirements set by the city along with roof line variation on all four sides. The new location will include sustainable features such as a bike rack, LED lighting and a landscaping plan that includes native plants.

Due to poor soil condition on the new site, crews put the store on 85' long steel pilings (pictured left).

Culver's plans to open their new restaurant in December.

Dentist Office Expansion Project

A dentist office in Charles City will soon be able to serve their patients more efficiently when DSC crews finish a new 2,000 SF one-story addition. Started in April, the new wood-framed dentist office addition will help expand business for owner, Dr. Scott Hanson and his colleagues at Central Park Dentistry.

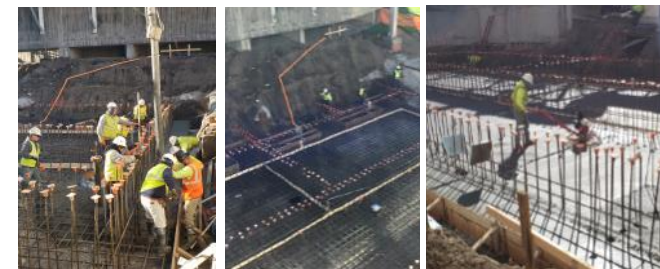


Rendering provided by ATURA architecture

The project includes removing and reworking an existing parking lot and incorporating a crawl space and partial basement under the addition. The phased project will allow the dentist office to continue work without interruption. When the addition is complete, the staff will relocate into it while crews remodel the existing office. The office will grow from six operatories to thirteen with up-to-date technology and equipment, a larger sterilization room, and a better defined, larger waiting room and entrance.

Des Moines Wastewater Reclamation Authority Grit Removal

Dean Snyder Construction was selected by the City of Des Moines to make improvements to the existing grit removal system at the wastewater infrastructure in Des Moines.



The project includes tank demolition, interior equipment demolition, site electrical work, and minor site work. DSC crews recently poured the base slab foundation for the new tanks and pump room. It included 220 yards of 18" thick concrete using Penetron Admix in it, which reduces concrete permeability by permanently sealing microcracks, pores and capillaries, and effectively protecting the concrete against water penetration and the effects of deterioration, even under high hydrostatic pressure.



ATURA architecture: Project Snapshot

Since rebranding and moving into their new office in May, ATURA has grown expediently. They now have 15 on their design staff and have several projects finishing construction, starting construction, or on the boards.

Recent Notable Completions

ATURA office

As the need for additional staff & services grew, a new office



was planned adjacent to the DSC corporate office. The addition includes space for up to 15 staff on the ground level with an additional capacity of 20 upstairs. The open concept is flooded with custom designed and fabricated design elements by ATURA & DSC, including cherry wood clouds, a LED chandelier, magnetic walls, and custom iron railings.

Completion: June 2018

Oelwein Community School - Church Williams Athletic Performance Facility

This project included the renovation of 8 classrooms and a 1969 pool area into a flexible training facility with a climbing wall, track, field turf, batting cages, wrestling mats, and collapsible lifting racks.



Cost: \$1.75 Million

Completion: Oct 2018

Northwood-Kensett School - Industrial Arts & HVAC Expansion

This project included a 12,000 SF industrial arts expansion with a metals/agriculture and industrial tech wing. Classroom integration allows for seamless shop & teaching space. Also included was an entire HVAC upgrade.



Cost: \$6.45 Million

Completion: Sept 2018

ATURA architecture is a subsidiary of DSC.